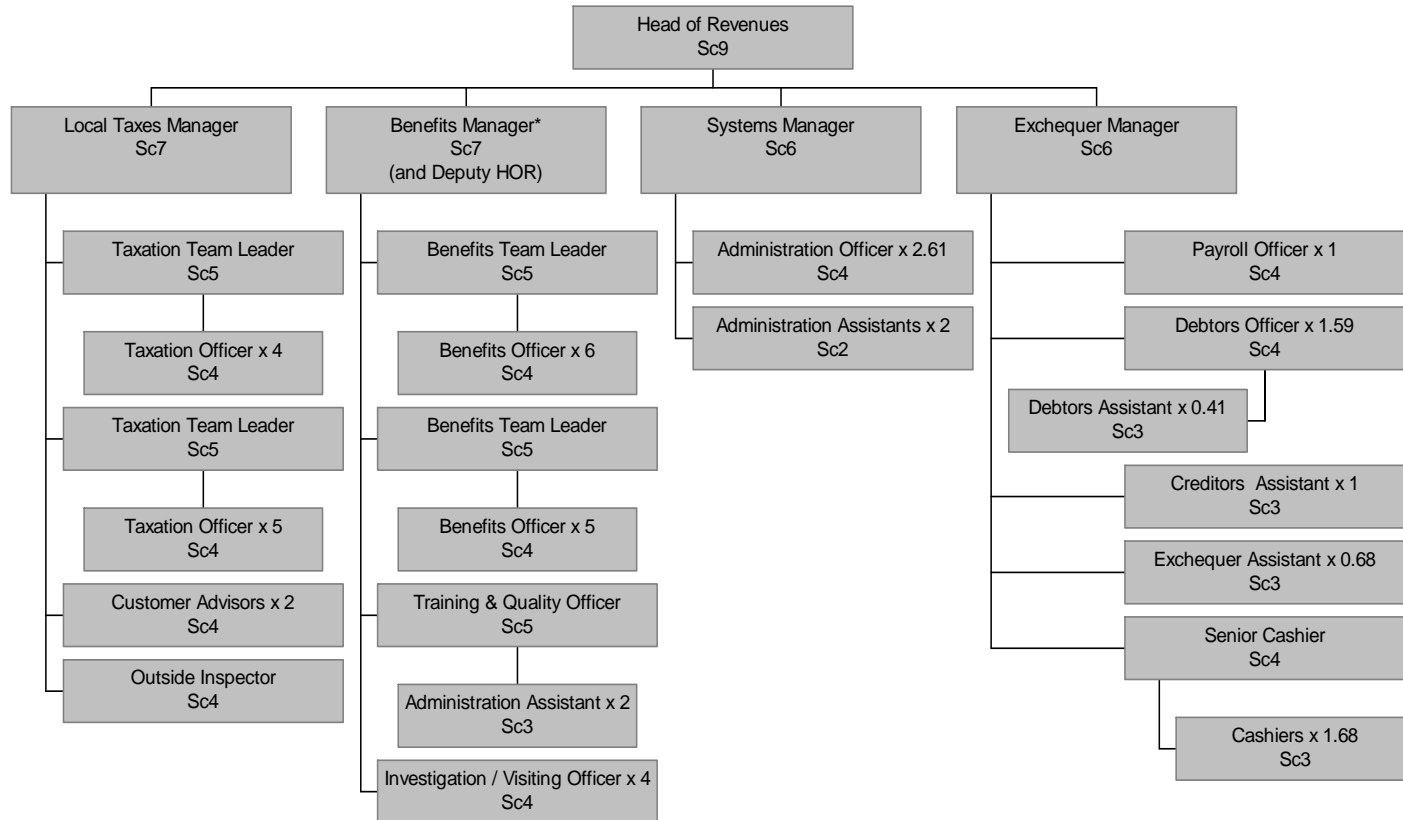


# FINANCE DEPARTMENT REVENUES SECTION



Total people: 56

Total FTEs: 50.97

February 2003

\* supplement of four increments applicable

Taxes - 16 staff 15 FTE

Benefits - 23 staff 21 FTE

Systems - 6 staff 5.61 FTE

Exchequer - 10 staff 8.36 FTE

**Total for Teams - 55 staff, 49.97 FTE (excluding Head of Revenues)**